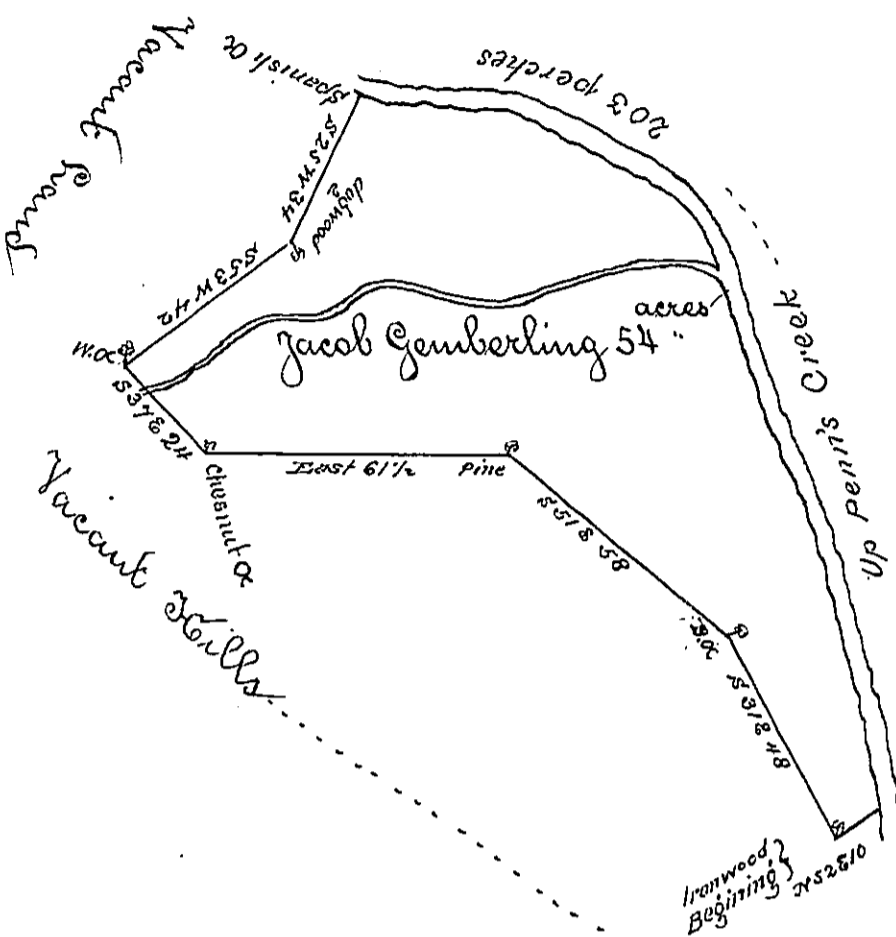


The Courses up the Creek is as follows viz.....

- N 11 W 52
- S 19 W 74
- S 65 W 57
- S 85 W 20



The Draught of a Tract of Land called Crabtree Bottom situate on Dennis Creek in Northumberland County containing Fifty four Acres & Fifteen perches with the usual allowance <sup>proportionate to</sup> six ac<sup>rs</sup> per cent for Roads &c. surveyed the 28<sup>th</sup> day of Sept<sup>r</sup>: Anno Dom. 1768 In Pursuance of an Order of Survey to Jacob Gemberling Bearing date at Philad<sup>a</sup> the 16<sup>th</sup> of Nov<sup>r</sup>: 1767 and Numbered 4576

To John Lukens Esq<sup>r</sup> Dir<sup>r</sup>: Gen<sup>l</sup> }  
of the Province of Pennsylvania }

of W<sup>m</sup> Hoagland D. S.

IN TESTIMONY that the above is a copy of the original remaining on file in the Department of Internal Affairs of Pennsylvania, made conformably to an Act of Assembly approved the 16th day of February, 1833, I have hereunto set my Hand and caused the Seal of said Department to be affixed at Harrisburg, this first \_\_\_\_\_ day of \_\_\_\_\_ December \_\_\_\_\_ 1896

*James W. Latta*  
Secretary of Internal Affairs.